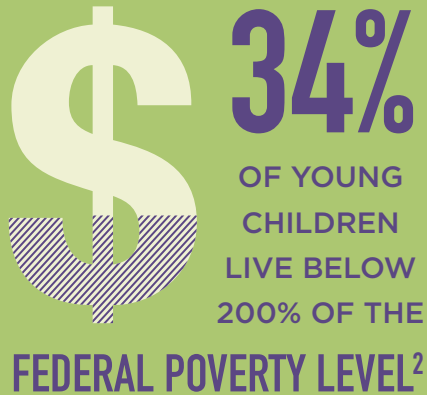




SNAPSHOTS OF HAWAII'S YOUNG CHILDREN (AGES 0-5)

THERE ARE ABOUT 105,000 CHILDREN AGES 5 & UNDER IN HAWAII¹

ECONOMIC SECURITY



- **33%** OF YOUNG CHILDREN LIVE IN A FAMILY HEADED BY A SINGLE PARENT³
- EACH YEAR OVER **7,600** FAMILIES EXPERIENCE THE BIRTH OF A FIRST CHILD⁴
 - **44%** OF THESE NEW PARENTS ARE UNMARRIED⁵
 - **7%** OF THESE NEW MOTHERS DO NOT HAVE A HIGH-SCHOOL DIPLOMA⁶

HEALTH & SAFETY

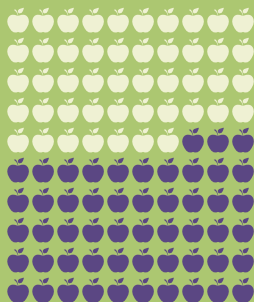


OF BABIES ARE BORN TO WOMEN WHO RECEIVE EARLY PRENATAL CARE⁷

- **8%** OF BABIES ARE BORN AT LOW-BIRTH WEIGHT (LESS THAN 5.5 lbs.)⁸
- OVER **700** YOUNG CHILDREN ARE CONFIRMED ABUSED AND/OR NEGLECTED EACH YEAR, OF WHICH 46% ARE ONE YEAR OLD OR YOUNGER⁹
- **3%** OF YOUNG CHILDREN ARE WITHOUT HEALTH INSURANCE¹⁰
- **81%** OF CHILDREN AGES 19 TO 35 MONTHS HAVE AGE-APPROPRIATE IMMUNIZATIONS¹¹
- **5** INFANTS FOR EVERY **1,000** BORN DIE WITHOUT HAVING CELEBRATED THEIR FIRST BIRTHDAY¹²

EDUCATION

53% OF 4-YEAR-OLD



CHILDREN ATTEND NURSERY SCHOOL OR PRESCHOOL¹³

- OVER **2,000** YOUNG CHILDREN ARE IN LICENSED CHILD CARE¹⁴
- **8%** OF KINDERGARTEN CLASSES HAVE AT LEAST THREE-FOURTHS OF ALL ENTERING CHILDREN CONSISTENTLY DISPLAYING THE SKILLS & CHARACTERISTICS NECESSARY FOR SUCCESS IN SCHOOL LIFE¹⁵

REFERENCES

- ¹ U.S. Census Bureau. 2012. Annual Estimates of the Resident Population by Single Year of Age and Sex for the United States and States: April 1, 2010 to July 1, 2011
- ² Steven Ruggles, J. Trent Alexander, Katie Genadek, Ronald Goeken, Matthew B. Schroeder, and Matthew Sobek. 2012. Integrated Public Use Microdata Series: Version American Community Survey 2011 Sample. Minneapolis: University of Minnesota
- ³ U.S. Census Bureau. 2012. 2011 American Community Survey 1-Year Estimates, Table B05009: Age and Citizenship of Own Children Under 18 Years in Families and Subfamilies by Living Arrangements and Nativity of Parents
- ⁴ Hawai'i Department of Health, Office of Health Status Monitoring. 2013. 2011 Vital Statistics, Special request
- ⁵ Hawai'i Department of Health, Office of Health Status Monitoring. 2013. 2011 Vital Statistics, Special request
- ⁶ Hawai'i Department of Health, Office of Health Status Monitoring. 2013. 2011 Vital Statistics, Special request
- ⁷ Hawai'i Department of Health, Hawai'i Health Data Warehouse. 2013. Hawaii Births by Prenatal Care, Years 2000-2011
- ⁸ Hawai'i Department of Health, Office of Health Status Monitoring. 2013. 2011 Vital Statistics, Special request
- ⁹ Hawai'i Department of Human Services, Management Services Office. 2012. A Statistical Report on Child Abuse and Neglect in Hawai'i: 2011
- ¹⁰ Steven Ruggles, J. Trent Alexander, Katie Genadek, Ronald Goeken, Matthew B. Schroeder, and Matthew Sobek. 2012. Integrated Public Use Microdata Series: Version American Community Survey 2011 Sample. Minneapolis: University of Minnesota
- ¹¹ U.S. Centers for Disease Control and Prevention. National Immunization Survey Q1/2011-Q4/2011: Estimated Vaccination Coverage with 4:3:1 plus 3 or more doses of Hib vaccine of any type, 3 or more doses of HepB vaccine, and 1 or more doses of varicella vaccine
- ¹² Hawai'i Department of Health, Office of Health Status Monitoring. 2013. 2011 Vital Statistics, Special request
- ¹³ Steven Ruggles, J. Trent Alexander, Katie Genadek, Ronald Goeken, Matthew B. Schroeder, and Matthew Sobek. 2012. Integrated Public Use Microdata Series: Version American Community Survey 2011 Sample. Minneapolis: University of Minnesota. Kindergarten not included
- ¹⁴ PATCH. 2013. Licensed capacity and vacancies of Licensed Child Care Centers and Programs in Hawai'i: 2012, Special request 2012. Preschool programs excluded
- ¹⁵ Hawai'i Department of Education and Good Beginnings Alliance, 2012. Hawai'i State School Readiness Assessment, School Year 2012-2013

SUGGESTED CITATION

He, S.J., Stern, I.R., Nakamura, L. (2013). Snapshots of Hawai'i's Young Children. Honolulu: University of Hawai'i, Center on the Family.

FOR MORE INFORMATION, PLEASE CONTACT:

Center on the Family, CTAHR, University of Hawai'i-Mānoa, 2515 Campus Road, Miller 103, Honolulu, HI 96822, (808) 956-4132

Hawai'i KIDS COUNT is funded by the Annie E. Casey Foundation. We thank them for their support, and we acknowledge that the findings and conclusions presented in this report are those of the authors alone and do not necessarily reflect the opinions of the Foundation.